

# KILOWATT

## THANK YOU, VETERANS

**For your leadership, teamwork, resiliency and dedication to our safety and freedom, we thank all veterans for their service.**

### DECORATE SAFELY THIS HOLIDAY SEASON

The holiday season offers great moments for building memories, but when it comes to decorating, it's also the perfect time to think about safety.

"There are about 200 decorating-related injuries each day during the busy holiday season," said Ann Marie Buerkle, acting chairman of the Consumer Product Safety Commission (CPSC). "Make safety a part of your family's holiday decorating this year."

Between November 2016 and January 2017, holiday decorating injuries resulted in 18,400 emergency room visits, nationwide. Local fire departments look to the holiday season as a time of increased vigilance, often tied to many of the activities that have become family traditions.

"It's important to use common sense when you're dealing with holiday decorating, particularly with lighting, candles and electrical wiring," said Bruce Bouch, a U.S. Fire Administration fire program specialist. "Holiday decorations are designed for temporary use, and that means they are essentially disposable."

According to the National Fire Protection Association (NFPA), the top three days of the year for candle fires in the U.S. are Christmas Eve, Christmas Day and New Year's Day. NFPA statistics also indicate that one of four Christmas tree fires are caused by electrical problems.

"It's always important to inspect holiday lights each year before you put them up,"

said Bouch. "You may find that there are pinches or torn areas on the insulation."

Open, exposed wiring or any signs of fraying or pinching are indications of weakened wiring. Those flaws are prone to breakage and may raise the potential for heat buildup, which can cause a fire. Bouch recommends a thorough inspection of your holiday lights to identify potential hotspots and damage to the strings.

"When you're checking everything on the wiring and fixtures, make sure you check for chewing damage from wild animals or your own pets," adds Bouch. "Also look for signs that the insulation itself is wearing thin enough to expose wiring."

The U.S. Fire Administration, the CPSC and non-government safety organizations are also focused on reminding consumers that extension cords, whether labeled for indoors or outdoors, are also designed for temporary use.

"Your household wiring is a solid metal wire," said Bouch. "Extension cords are strands of three thin wires that are twisted together. That pliability can allow them to break over time, increasing the chance that they could fail within so many years."

Experts also warn that candle use increases the risk of accidental fires, and suggests that consumers consider battery-operated LED candles as safer alternatives. According to NFPA, candles start two out of every five home fires each year, and



about 100 Christmas tree fires occur each holiday season, causing about \$12 million in damage annually.

You can reduce the risks by placing your Christmas tree away from heat sources, like vents or space heaters, and topping off the water reservoir daily.

Minnesota's electric cooperatives join our local firefighters, the NFPA and the CPSC in urging you to consider safety as you decorate and enjoy the holiday season with family and friends.

### HAPPY THANKSGIVING

**KPC CLOSED  
NOVEMBER 28-29  
IN OBSERVANCE OF  
THANKSGIVING.**



*Thanksgiving is a time to step back and reflect on all of the blessings that we have been gifted with and be appreciative.*

*The KPC family wishes for you and your families*

*The Gift of Faith and Blessing of Hope.*

**"BE THANKFUL IN ALL THINGS"**



It's that time of the year again that the Toys for Tots program begins their campaign to collect donated toys for millions of less fortunate children and bring a little joy into their lives during the Christmas season. You can support this program, which is managed by dedicated United States Marines and local volunteers by dropping off an unwrapped toy or two in the drop box located in the front lobby of Kandiyohi Power Cooperative.

The toys will be distributed to children within our own communities. Thank you in advance for your donations.



### Energy Efficiency Tip of the Month

Trim your holiday energy costs by choosing energy efficient LED lights! LED holiday lights use less energy and can last up to 40 seasons. They're also easier to install - you can connect up to 25 LED strings without overloading a wall socket!

Source: [energy.gov](http://energy.gov)



## OPERATION ROUND UP QUARTERLY DISBURSEMENTS

- Sunburg Ambulance \$1000
- Lakes Area Rural First Responders \$1000
- Atwater Ambulance \$1000
- Blomkest First Responders \$1000
- Kandiyohi First Responders \$1000
- Carris Health Dental Clinic \$1000
- Willmar High School/Supermileage \$ 500
- Willmar High School Robotics \$1000
- West Central YES – PWELC \$1000
- Jaguar Kids Connection \$ 650
- Community Christian School \$1000
- The Link \$1000
- Glacial Lakes Adult Basic Ed \$ 700
- Brandon Ritt \$1000
- Total Distribution \$12,850



Thank you KPC Members for supporting Operation Round Up. The funds donated, touch many lives in many different ways. Also, thank you to the Board of Trustees who volunteer their time to meet, review applications and disburse funds to organizations in our local community.

### FAREWELL AND BEST WISHES

KPC sends Farewell and Best Wishes to two employees, CFO Anthony Stern and HR Kari Means. Anthony took a CFO position with People's Electric Cooperative in Oronoco, Minnesota and Kari has taken a Senior Accountant position with Carris Health in Willmar. We appreciate all that they brought to KPC, for their years of service and dedication to KPC and its members. May you both achieve all that you hope for.



LIKE US ON FACEBOOK

[WWW.FACEBOOK.COM/KANDIYOHIPOWERCOOPERATIVE](http://WWW.FACEBOOK.COM/KANDIYOHIPOWERCOOPERATIVE)



Every year, KPC Employees hold activities throughout a week-long fundraising event for a local organization. This year we raised \$2605.50 for United Way. These funds are raised through individual donations, a silent auction and payroll deductions.



## Keep your most precious valuables safe with Heartland Security.

Our interactive security systems protect your home and family from intruders, carbon monoxide, fire, and other threats.

1-888-264-6380  
heartlandss.com



# HEAT PUMP

Heat pumps are typically much more efficient than electric resistance systems and can be a solid solution in a wide variety of circumstances. They can be the right choice in a manufactured home, a construction addition or as a replacement for a broken or inefficient HVAC system. They're also becoming more popular for central heating in new construction.

Here's how heat pumps work: During winter, they pull warmth from the outside air into the home; during summer, the process is reversed and warmth from inside the home is exhausted outside. It may seem odd that warmth can be found in outdoor winter air, but heat pumps are amazing inventions. They've become much more efficient in recent years to the point that they can be effective year-round in most cold winter climates.

The efficiency of a heat pump is measured in two ways: The HSPF (Heating Season Performance Factor) rating measures heating efficiency, and the SEER (Seasonal Energy Efficiency Ratio) rating measures cooling efficiency. The minimum ratings for a heat pump are HSPF 8.2 and SEER 14. Heat pumps with the ENERGY STAR® rating are significantly more efficient than the minimum standard.

Here's how to know if you should consider a heat pump for your home:

1. Want to save money? If you are currently heating your home with electric resistance or propane or heating oil, and you seal air leaks and install additional insulation, installing an efficient heat pump could reduce your heating costs by up to 75%. And if you are currently cooling your home with an old A/C system or window A/C units, you could also cut your cooling costs.
2. Want heating and cooling flexibility? A ductless mini-split heat pump can serve up to 4 individual zones or rooms, and each room's temperature can be controlled separately.
3. Want safer heat? Heat pumps eliminate the need to burn fuels

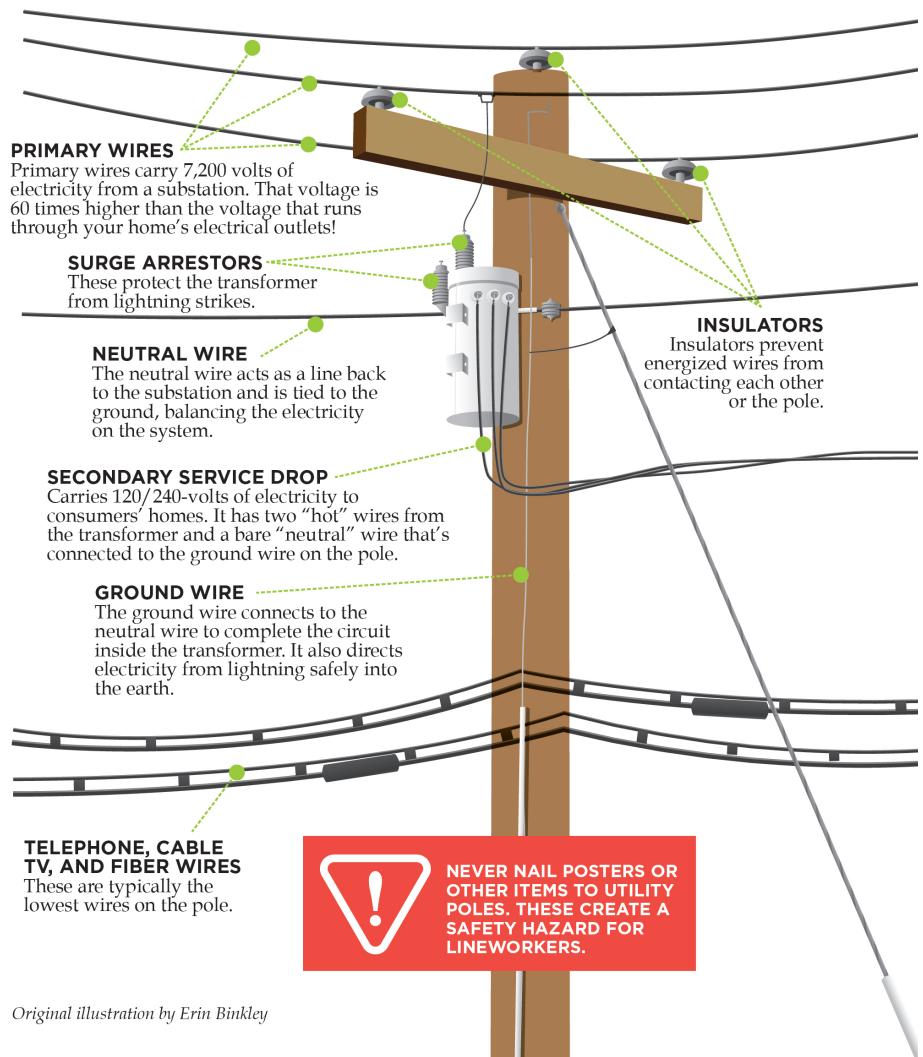
inside your home and exhaust combustion gases. There's no risk of carbon monoxide or gas leaks that can come from flaws in a system that runs on natural gas, propane, fuel oil or wood.

As with any major home improvements or installations, be sure to get a few quotes and references before committing or making any payments.



## WHAT'S ON THAT POLE?

This illustration shows the basic equipment found on electric utility poles. The equipment varies according to the location and the service they provide.



Original illustration by Erin Binkley

## KILOWATT CREDIT SCORECARD

Win a credit on your next bill.

Account numbers used are 9 digits, as appearing on your monthly bill. If you find your account number in this KILOWATT, please notify us by the 4th to claim your credit.

We will credit your bill. Do not deduct the amount from your bill; pay as usual.  
No one claimed their account numbers. Each account number is worth \$5.00.

991054001

991651001

101669001

993136001

76160050



# Kandiyohi Power Cooperative

8605 47th Street NE, Spicer, MN 56288  
www.kpcoop.com

**Office Hours: Mon.-Fri. 7:30am – 4pm**

**Phone: 1-800-551-4951**

**Fax: 320-796-0620**

**Tom McCormick**

**Electric Inspector: 320-221-2809**

Drop boxes available for your convenience at Cash Wise and headquarters building near flag pole.

### MANAGEMENT STAFF

Scott Froemming, CEO  
Diane Maurice, Marketing/Customer Service  
Ryan Nelson, Engineering  
Scott Luberts, Line Superintendent

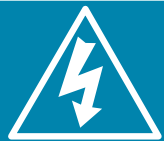
### BOARD OF DIRECTORS:

Dale Anderson, Chair- 320-894-1687	District 1
Rollo Campe- 320-894-1601	1
Larry Powers- 320-212-7960	1
Dan Pomranke, VC- 320-894-7113	2
Todd Post- 320-212-1119	2
Stan Wubben, Secretary- 320-905-8325	2
Darrell Fostervold - 320-212-4824	3
Diane Helgeson- 320-220-3745	3
Robbert Stone- 320-894-8867	3

### KILOWATT STAFF:

Robin Ryks, Editor

**CALL BEFORE YOU DIG!!!**  
www.gopherstateonecall.org  
**1-800-252-1166**



## 24-HOUR OUTAGE NUMBER

When your lights go out, so do we.

Call us if your power goes out even if you think your neighbors already did. Leave one light on so you know when power has been restored and make sure you have an emergency kit ready.

**1-800-551-4951**



Yoda, Unicorns and Pumpkins, oh my!

We were charmed, spooked and impressed by all the children who came to Trick or Treat at the Co-op on October 31<sup>st</sup>! We loved seeing all the unique costumes! There were plenty of tricks and treats to go around, including candy, cookies and coloring. We hope you can join us next year for this fun, family friendly event!

## FALL SAFETY TIPS FOR KIDS!

Fall is finally here! The leaves are changing, the weather is cooler and the holidays are just around the corner. But Fall also brings a higher risk of home fires and electrical safety hazards.

Read the safety tips below and fill in the blank with the correct term from the word bank.



1. Candles and \_\_\_\_\_ should only be used by adults.
2. An adult should always stay in the kitchen when something is \_\_\_\_\_.
3. Smoke alarms should be tested every \_\_\_\_\_ to ensure they are working. Batteries should be replaced at least once every \_\_\_\_\_ or right away if they start to "beep."
4. Make sure all \_\_\_\_\_ are blown out before leaving a room.
5. Keep any items that can burn away from the stove, toaster and other cooking \_\_\_\_\_.



## WORD BANK

APPLIANCES  
COOKING

YEAR  
MATCHES

CANDLES  
MONTH

*Answer Key: 1. matches 2. cooking 3. month; year 4. candles 5. appliances*