

KILOWATT

AHEAD OF SCHEDULE...



Great River Energy (GRE) announced, at their annual meeting, that their company goal to supply its member-owner cooperatives, (which includes Kandiyohi Power Cooperative- KPC), with energy is 50% from renewable resources by 2030. Their interim renewable energy goals are 30% by 2020 and 40 % by 2025.

GRE has already met Minnesota's 25% renewable energy standard eight years ahead of requirements. They continue to evolve their power supply portfolio, delivering even more renewable energy to their member-owner cooperatives to help them remain competitive in a changing market. GRE looks forward to meeting this goal for the benefit of their members while maintaining strong system reliability.

This announcement of the 50% renewable goal comes at a time when home and business owners are increasingly interested in having more renewables in their energy supplies. Increasing renewables can present advantages to cooperatives for attracting and retaining business as well as meeting



**KPC OFFICES CLOSED
LABOR DAY**

MONDAY, SEPTEMBER 3, 2018

1-800-551-4951 – 24/7

the expectations of members who value renewable energy.

"I applaud the leadership and strategic vision that this announcement by GRE represents. Consumers of all kinds - companies, cities, governments and households- are asking for more renewable energy and competing for their loyalty and selling them more electricity for more uses will increasingly hinge on it being as clean and close to zero-carbon as it can be," said Rolf Nordstrom, president and chief executive officer of the Great Plains Institute. "Less carbon, more electricity-that's the future for smart utilities."

GRE has spent more than a decade positioning its portfolio, lowering costs and reducing dependence on coal as a fuel source, while improving the overall flexibility of its generation portfolio. These measures have resulted in a 35% reduction in GRE's carbon dioxide emissions since 2005.

GRE has exited two contracts for coal-based electricity in recent years and in, 2017, retired a North Dakota power plant owned by the cooperative. Improvements at GRE's Coal Creek Station power plant have reduced the plant's emissions of

sulfur dioxide and mercury by up to 40%, nitrogen oxides by 20% and carbon dioxide by 4% in recent years, while operational adjustments allow the plant to ramp down production when market conditions warrant.

GRE's renewable portfolio currently includes 468 megawatts (MW) of wind energy, 200 MW of hydropower, 4 MW of solar and 30 MW of biomass. GRE has announced plans for an additional 300 MW of favorable priced wind energy by 2020.

Renewable energy, particularly wind, is currently our lowest-cost option for new generation resources," said David Saggau, President and CEO of GRE.

In its 2017 integrated resource plan filing to the Minnesota Public Utilities Commission, GRE projected wind energy as its sole new resource need over the next 15 years. GRE will continue to maintain a diverse portfolio to best serve its member-owner cooperatives. Learn more at www.greatriverenergy.com.



**LIKE US ON
FACEBOOK**

WWW.FACEBOOK.COM/KANDIYOHIPOWERCOOPERATIVE

ANNUAL STINGERS BASEBALL GAME ANOTHER BIG HIT...



Despite the fact they were predicting heat indexes in the 3-digit numbers on Wednesday, June 13th for our 8th annual Customer Appreciation Stingers Game, we had an excellent turnout of approximately 2000 members. All 1700 adult tickets were reserved along with 446 requested kids' tickets.

This year we again collected donations for the Food Shelf. A very special thank-you to everyone who contributed. A total of 800 pounds of food was collected.



KPC WINS 2018 LEROY VANDERPOOL "EXCELLENCE IN SAFETY" AWARD FOR THE SECOND TIME IN THE PAST 3 YEARS.

Who is Leroy? Leroy was a Helicopter/Gunship Crew Chief in Vietnam, an Electrical Lineman, MMUA Loss Control Instructor and an ECE Safety Director. He had a passion for the well-being of people, willingly share his expertise and had a never-ending smile.

The Leroy Vanderpool award is given out each year by Minnesota Rural Electrical Trust (MRET). MRET was formed in 1995 in response to lack of Workmen's Compensation capacity in the market and has 34 cooperative members. It is a qualified self-insured insurance company and operates under the same regulatory (MN Department of Commerce) oversight as any insurance company doing business in MN. "Culture" focused, the Leroy Vanderpool award is based on processes and impacts on culture. All 34 members are eligible. Congratulations Kandiyohi Power Cooperative in achieving the highest standards in safety.



OPERATION ROUNDUP

The following is the 3rd quarter list of donations from the Kandiyohi Power Cooperative Charitable Trust Fund:

Atwater First Responders	\$1000
Pennock 1st Responders	\$1000
Spicer 1st responders	\$1000
Totes for Teachers	\$2500
Community Christian School – STEM	\$1296
Mill Pond Mile	\$ 500
Paynesville Area LAH/BNP	\$ 500
Pioneer Public TV	\$1000
Steve Schmitz Benefit	\$ 500
Willmar Area Women's Fund	\$2000
TOTAL	\$11296

Energy Efficiency Tip of the Month

Setting your thermostat to a colder setting than normal when you turn on your air conditioner will not cool your home any faster and could result in excessive cooling and unnecessary expense.

Source: U.S. Dept. of Energy



KILOWATT CREDIT SCORECARD

Win a credit on your next bill.

Account numbers used are 9 digits, as appearing on your monthly bill. If you find your account number in this KILOWATT, please notify us by the 4th to claim your credit.

We will credit your bill. Do not deduct the amount from your bill; pay as usual. No one claimed their account numbers in the last issue. Each account number is worth \$5.00.

This is a list of Capital Credit checks that have been returned to Kandiyohi Power Cooperative because of wrong addresses. If you recognize any one of these names and know of a new address or way to contact them, we would greatly appreciate your help. Call us at 1-800-551-4951

ANDERSON, DARREL
 ARNOLD, VERNON
 AUNE, TRENT
 BAHNER, TANYA
 BARBER, HEATHER
 BARON, TAMMY
 BENGSTON, JUNE
 BENTON, WARREN
 BEYER, KRIS
 BIEGERT, DAVID
 BOMSTAD, IRENE
 BOWERS, RICHARD
 BRISTOW, WILLIAM
 CAMPEN, DOUG
 CARLSON, LLOYD
 CARLSON, STACY
 CLARK, JEFF
 COOPER, SCOTT
 CROOKS, CREED
 DAMMANN, GLENN
 DANGLER, MARY
 DICK, JESSICA
 EID, TIM
 ENDRISS, MORGAN
 ERICKSON, ALLEN
 FEIDT, WENDY
 FRANSEN, ROBERT
 FRESKE, BERNARD
 GALLES, ROGER
 GILLIS, RITA
 GORDON, FRED
 GREYDANUS, JENNIFER
 GRONES, LEROY
 GRONLI, MARY
 GUILLERMO, CARRIAGA
 HAFSTAD, MARILYN
 HAMBORG, MARIE
 HANSON, DENNIS
 HANSON, KRISTAL
 HANSON, SCOTT
 HAUCK, RICHARD
 HAUSER, TIM
 HOFFENKAMP, BONNIE
 HOFSTAD, AMY
 HUDDY, TRAVIS
 HULTGREN, LUCILLE
 INDIAN BEACH COVE
 JAUNICH, JAMES
 JAWORSKI, SANDI




JERABEK, MARJORIE
 JOHNSON, JAMES
 KIDROWSKI, ANTHONY
 KING, CRAIG
 KNIGHT, VICTORIA
 KOSHENINA, NICHOLAS
 KRONEBERGER, DONAN
 KRUPA, JENNIFER
 LAHR, ANGIE
 LIEN, RICK
 LOBBINS, ANDREW
 LOGE, PAMELA
 LOHRE, TRUDY
 LYKKEN, STEVEN
 MALAND, DONALD
 MARQUARDT, JAMES
 MATTKE, PAUL
 MAYER, JULAYNE
 MEEHAN, JAKE
 MEIXNER, CHRISTOPHER
 MILHAUSEN, TANYA
 MILLER, DON
 MOEN, ALLEN
 MOLENAAR, GREGORY
 MOLITOR, TROY
 NELSON, PAM
 NICKLES, CAROL
 NOVICKI, GARY
 OLSON, LYNN
 OLSON, MAVIS
 OLSON, STEVE
 PALMER, JUSTIN
 PANKRATZ, CAROL
 PEARCE, DON
 PETERSON, ELAINE
 PILLATSKI, JODI
 PORTER, GARY
 RANS, DELORES
 REMER, DAVID
 ROSENDAHL, HAROLD
 RUCHT, EDWARD
 RYAN, JODEE
 SCHOLL, ANDREW
 SHRIVER, KEVIN
 SHRIVER, ROBERTA
 SIGAFOOS, DENNIS
 SKOGLAND, HARLAN
 SLETTEN, DAVID
 SMITH, KARL

SMITH, TODD
 SOLUM, JON
 SOPER, RICHARD
 SPLETTER, TERRY
 STADTMUELLER, TOM
 STEKLY, LEN
 SWANSON, ELEANOR
 SWYTER, JON
 THORSON, LOWELL
 TODD, LEIA
 TOMPOROWSKI, WILLIAM
 UTTERMARK, MATTHEW
 WALKIN, DARREL
 WALL, CRYSTAL
 WALTON, JACK
 WASBERG, PRISCILLA
 WAUGH, FRED
 WAWRZYNIAK, SCOTT
 WEINANDT, MARY
 WESINGER, CORY
 WHITE, RONALD
 WILSON, ARLENE
 WILSON, KAREEN
 WULFS, BRENT
 ZEINER, CHUCK
 ZIMMER, JOHN
 ZUIDEMA, BERNARD
 ZUIDEMA, BYRON

Tips for a Safe Harvest



Harvest season brings hard work and can be an exhausting, but rushing the job to save time can be extremely dangerous (even deadly!) when working near overhead power lines. We urge farm operators and workers to keep the following safety tips in mind:

-  Use care when operating large machinery near power lines.
-  Inspect the height of equipment to determine clearance.
-  Always keep equipment at least 10 feet away (in all directions) from power lines.
-  Remember to lower extensions when moving loads.
-  If a power line is sagging or looks to be dangerously low, please call us immediately.

1004993001

Source: SafeElectricity.org

Lineman changing out pole in City of Kandiyohi



Keep your most precious valuables safe with Heartland Security.

Our interactive security systems protect your home and family from intruders, carbon monoxide, fire, and other threats.

1-888-264-6380
heartlandss.com





Kandiyohi Power Cooperative

8605 47th Street NE, Spicer, MN 56288
www.kpcoop.com

Office Hours: Mon.-Fri. 7:30am – 4pm

Phone: 1-800-551-4951

Fax: 320-796-0620

Tom McCormick

Electric Inspector: 320-221-2809

Drop boxes available for your convenience at Cash Wise and headquarters building near flag pole.

MANAGEMENT STAFF

Scott Froemming, CEO

Anthony Stern, CFO

Diane Maurice, Marketing/Customer Service

Dave Nelson, Engineering

Scott Luberts, Line Superintendent

BOARD OF DIRECTORS:

Dale Anderson, Chair- 320-254-3530

Rollo Campe- 320-894-1601

Larry Powers- 320-212-7960

Ted Olsen- 320-220-3084

Todd Post- 320-212-1119

Stan Wubben, Secretary- 320-905-8325

Darrell Fostervold, VC- 320-212-4824

Diane Helgeson- 320-220-3745

Robbert Stone- 320-894-8867

District

1

1

1

2

2

2

3

3

3

KILOWATT STAFF:

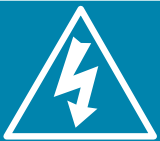
Robin Ryks, Editor



CALL BEFORE YOU DIG!!!

www.gopherstateonecall.org

1-800-252-1166



24-HOUR OUTAGE NUMBER

When your lights go out, so do we.

Call us if your power goes out even if you think your neighbors already did. Leave one light on so you know when power has been restored and make sure you have an emergency kit ready.

1-800-551-4951

Mamma Mia Salad

Salad:

1 head cauliflower - chopped

1 head broccoli - chopped

1 small red onion - chopped

4 cups red grapes (seedless) cut up

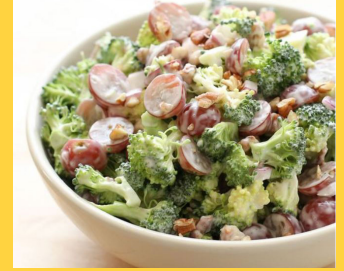
1 pound smoked bacon fried and chopped

Dressing – make an hour ahead and add last

2 cups Hellman's Mayonnaise

½ cup sugar

¾ cup grated parmesan cheese



Ingredients

Directions

Stir dressing into salad with the bacon. This salad is easy and keeps great for days in fridge. Makes you want to yell "Mamma Mia".

Lighting Labels and Lingo

These days, consumers have endless options when it comes to purchasing light bulbs, but the labels can be confusing! Use the information below as a helpful guide for browsing bulbs.

Lighting Facts

Per Bulb

Brightness 655 lumens

Estimated Yearly Energy Cost \$1.08

Based on 3 hrs/day
11c/kWh Cost depends on rates and use



Life 22.8 years

Based on 3 hrs/day

Light Appearance



Energy Used 9 watts

Source: U.S. Department of Energy



Read the Label

Under the Energy Labeling Rule, all light bulb manufacturers are required to give consumers key, easy-to-understand information on bulb efficiency. Take advantage of the Lighting Facts label, which gives you the information you need to buy the most energy-efficient bulb to meet your lighting needs. The label includes information on the bulb's **brightness, energy cost, life, light appearance** and **energy used** (wattage).

Save Energy

Bulbs are available in **many shapes and sizes** to fit your home's needs. Choosing more efficient bulbs can help reduce energy consumption and save you money!

- LEDs use 25%-30% of the energy and last eight to 25 times longer than halogen incandescent bulbs.
- Purchase ENERGY STAR-rated bulbs to maximize energy efficiency.

Buy Lumens, not Watts

Lumens measure the amount of light produced by the bulb. Watts measure energy consumption.

Tip: To replace a 100-watt incandescent bulb, look for a bulb that produces about 1,600 lumens.

Incandescent
100 watt
1,600 lumens

LED
14 - 20 watt
1,600 lumens